

M1

Signature Passthrough Dishwasher – 450mm Rack W 630mm x D 650mm x H 1530mm

The Starline M1 is an ideal solution where space in a restaurant, café or aged care facility is at a premium. With the use of 450mm racks the M1 requires a bench gap just of 510mm, and is compatible with 600mm deep benching. The 450mm dishracks hold 16 x 230mm plates, only 2 less than the 500mm dishracks which hold 18 plates. The M1 is increasingly popular for ergonomic (bend-free) glasswashing and options such as cold rinse are available for this purpose.

With Starline electromechanical controls the M1 remains a reliable option for most businesses – it is a simple to use, easy to service passthrough dishwasher that provides great wash results on a tiny footprint.

Starline dishwashers have been made in New Zealand since 1981, and are engineered specifically for our unique local conditions and regulations. The renowned reliability of the machines is also backed by most extensive service network and spare parts inventory in the country, ensuring that your Starline will not let you down.

Standard Features

- Autostart on door closure with 2 minute cycle
- Washes up to 480 plates per hour
- Easy installation supplied complete with:
 - Water supply hose
 - Detergent pump with injector line
 - No commissioning required
- Reliable results through robust stainless steel wash and rinse arms with precision stainless jets
- Easily serviced electromechanical controls
- Durable stainless steel construction
- Comprehensive 12 month Starline warranty
- Low hot water consumption of 2.6 litres per cycle
- Double filtration system via scrap trays and separate wash inlet filter

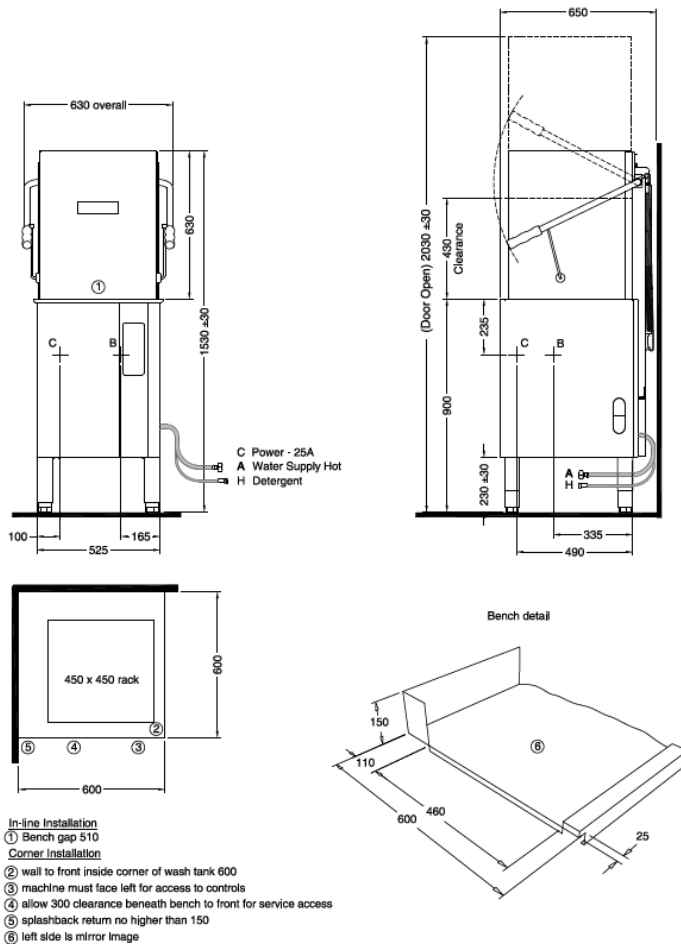
Includes:

- 2 x 600 70080 - 450mm dish rack
- 1 x 600 70081 - 450mm cup rack
- 1 x C660503 - cutlery container



M1

Signature Passthrough Dishwasher – 450mm Rack
W 630mm x D 650mm x H 1530mm



ISO9001

All Starline products are designed and manufactured by Washtech using the internationally recognised ISO9001 quality management system, covering design, manufacture and final inspection, ensuring consistent high quality at all times.

In line with policy to continually develop and improve its products, Washtech reserves the right to change specifications and design without notice.

WASHTECH LTD
PO Box 90-548
Auckland 1142
414 Rosebank Road
Avondale
Auckland 1026
New Zealand
Phone 09 829 0930
info@washtech.co.nz
www.starline.co.nz



On call service where you are. Washtech provides full service backup, 24 hours a day, 7 days a week with factory based technicians and a comprehensive nationwide network of independent service providers. STARLINE SERVICE 09 829 0923 © Copyright Washtech 2016

Hot water

Temperature	65°C
Connection	3/4" male; hose supplied
Pressure	200-350kPa
Flow	20 litres per min
Quality	Potable & soft
Backflow Prevention	Atmospheric Vacuum breaker
Consumption	2.6litres per cycle

Waste

Connection	1.5 BSP
Line	2" BSP

Electrical

Single phase	230V 50Hz 25A/phase
--------------	---------------------

Nominal Power Consumption

1P / 25A = 5.0kW rinse / 2.5W wash / 5.37kW max

Dimensions

Width	630mm
Depth	650mm
Height	1530mm
Weight	80kg

Packed Dimensions

Width	695mm
Depth	750mm
Height	1440mm
Weight	101kg
Cubicmetres	0.77m³

Water Quality Requirements

Hardness	ppm	pH
Min	20	7
Max	100	8
Ions	Cl- SO4 Fe Mn Cu CL2	
Max mg/l	100 400 0.1 0.5 0.05 0.1	

Refer operator manual for installation instructions

an Ali Group Company



The Spirit of Excellence