

## M1 Compact Passthrough Dishwasher

The M1 is a very compact passthrough dishwasher suitable for bench depths as little as 600 mm for in-line installation.

Retrofits to 510 wide bench gap - ideal replacement unit in many situations.

With huge 430mm vertical door clearance a wide range of washware can be washed in standard 435mm or optional 400mm dishracks.

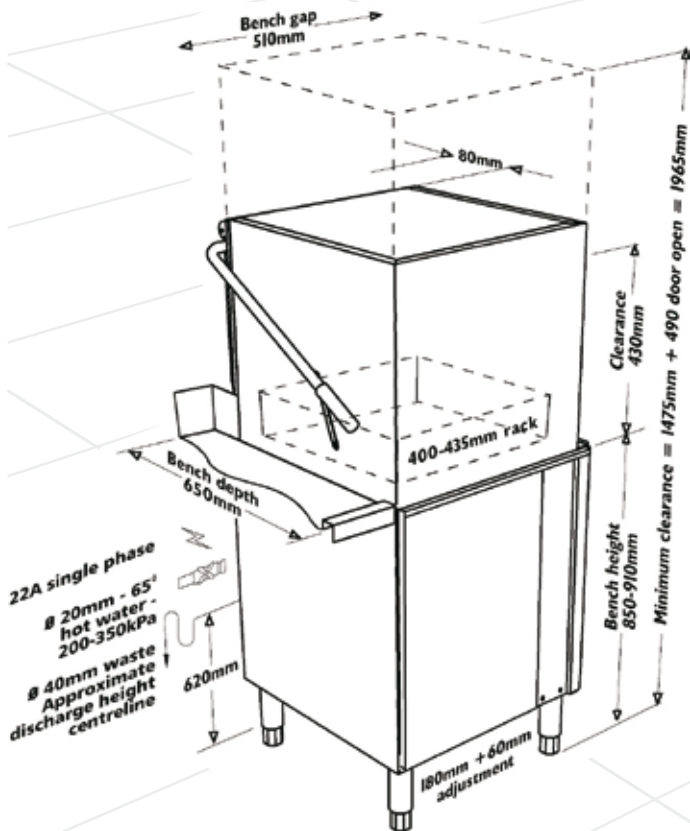
Low water consumption of less than 3 litres per cycle ensures highly efficient operation - minimising water, waste, power and chemical costs.

Effortless operation with light, well balanced door. Two minute cycle auto-starts on door closure.

Easy to keep clean with uncluttered internal design, easy-tilt rack slide and removable wash and rinse arm end plugs. Anti-drip door channels water away from washware. 220mm legs provide good access for cleaning beneath machine.

Easy installation with high waste connection point. 650mm benching recommended especially for corner installation but with 25mm splashbead 600mm is sufficient for in-line situations.

Supplied with two dishracks, one cuprack and one cutlery container.



Installation drawing and detail overleaf.

Starline products are proudly manufactured in New Zealand by Washtech. Over 25 years Washtech has earned the position of Australasia's leading wash equipment manufacturer by providing robust, reliable machines designed for ease of service and years of effective, efficient operation.



ISO 9001 certified and audited since 1993 - our equipment complies with all local hygiene, electrical and plumbing regulations.



Washtech products are supported nationwide by the STARLINE Service Network to ensure long term access to parts and after sales support and service including preventative maintenance programmes.

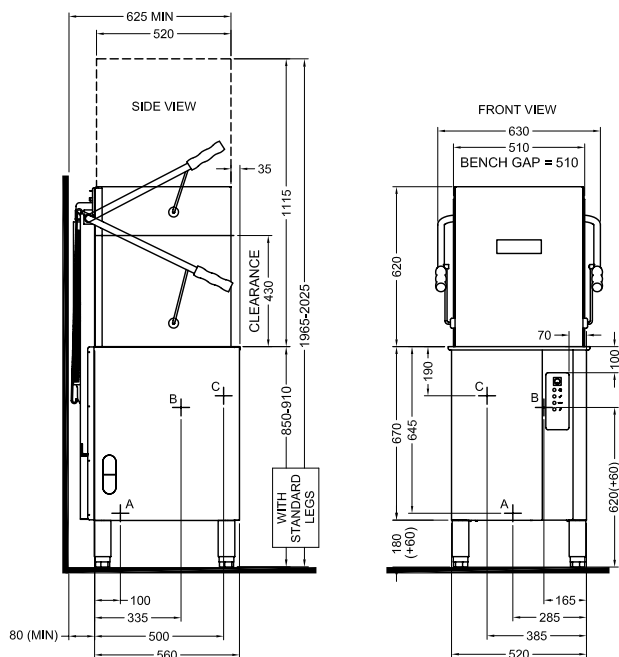


In line with policy to continually develop and improve it's products Washtech reserves the right to change specifications and design without notice.



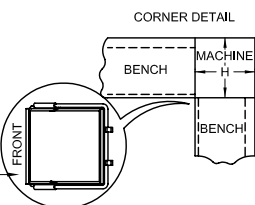
# STARLINE® M1

## M1 Compact Passthrough Dishwasher

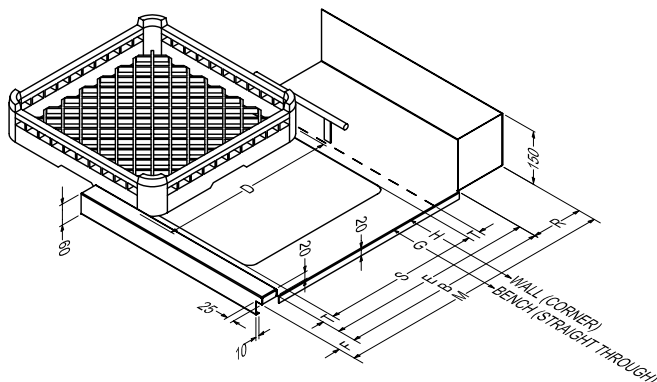


- A WATER SUPPLY
- B WASTE
- C POWER SUPPLY

MACHINE FRONT MUST FACE TO LEFT OF THE CORNER. ALLOW 300 SPACE FROM FRONT FOR SERVICE.



KEY		M1
M	BENCH DEPTH	650
R	RETURN	150
G	BENCH GAP	510
B	BENCH OPENING	460
F	SPLASH BEAD	40
D	RACK SIZE	435
E	RACK PATH	460
S	SINK WIDTH	350
T	CLEARANCE	35
H	DISTANCE TO WALL FOR CORNER INSTALLATION	660



Installer must be suitably qualified and ensure compliance with all local codes and standards including AS/NZS3500.1. Failure to comply even partially with installation instructions may void the warranty. Install machine on sound waterproof self-draining floor, with adjacent surfaces sealed against water and/or light steam. Use the adjustable feet to level the machine. Allow room for detergent to one side of machine or in adjacent cupboard. 20 litre container requires about 450H x 250W x 350D but smaller containers are available from many suppliers.

### Water Supply

Water temperature	65°C ± 5°C
Connection	20 mm (3/4" BSP) male
Pressure	200-350 kPa = 30-50 psi
Flow rate minimum	20 litres per minute
Water consumption	3 litres per cycle approx
Backflow prevention	Atmospheric Vacuum Breaker

Pressure limiter may be required. Don't use small diameter plastic supply lines. FLUSH supply line before connection. Poor quality supply or excessive water hardness may affect performance or damage machine - filtration and/or softening is recommended. Optional rinse booster pump available for very low pressure supply.

### Waste

40mm gravity drain - refer to point B in the installation diagram - run waste directly behind the machine or through hole in base.

### Power

Electrical supply required is single phase 230V 22A 50Hz, permanently wired via wall switch mounted adjacent to machine. Machine may also be installed on a 15A single phase circuit (with reduced rinse heating). For this requirement remove double adaptor and Red 0.75 wire from rinse over-temperature thermostat and reconnect Red 1.5 mm wire to the over-temperature thermostat.

### Benchwork

Refer to the bench detail drawing - all dimensions in mm. Recommended bench height 900, depth 650 but with 25 splashbead 600 is sufficient for in-line installation. Front of machine must face left in corner installations - allow 300 clearance from front to sink or legs for service access. Use sink smaller than rack with guide to prevent rack falling into sink.