

STARLINE®**GM**

Technical data sheet for

GM**High Performance Glasswasher**

W 500mm x D 530mm x H 830mm



High efficiency, high speed recirculating glasswasher suitable for busy bars..

Standard Features

- Fast 1 minute cycle, with large 5kW rinse elements for fast recovery between cycles
- High efficiency 2.6 litres per cycle hot water consumption
- Powerful wash pump recirculates wash water at nominal 100 litres per minute
- NZ standard 435mm x 435mm glass racks
- 290mm wash chamber height clearance
- Electromechanical controls
- Robust stainless construction
- Fits 600mm bench depth
- Removable rack slide
- 150mm legs to allow easy cleaning underneath
- Integral precision detergent dispensing pump
- Backflow prevention fitted

Accessories

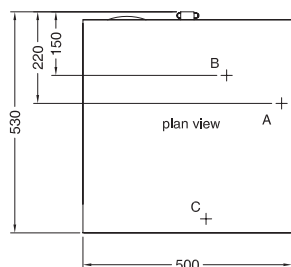
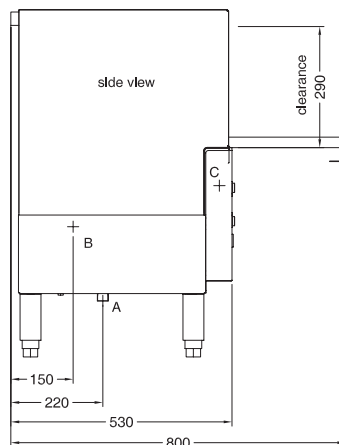
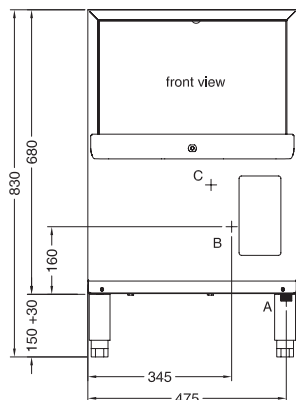
- 2 x 435mm Glass/Cup Rack

Options

- Rinse Pump
- Drain Pump
- Rinse Aid Injector
- Fisher Pre-rinse gun or faucet
- Complete wash stations



STARLINE®
PROFESSIONAL WASH SYSTEMS



STARLINE®
PROFESSIONAL WASH SYSTEMS

Designed and manufactured by
WASHTECH®

ISO9001
All Washtech products are designed and manufactured by Washtech using the internationally recognised ISO9001 quality management system, covering design, manufacture and final inspection, ensuring consistent high quality at all times.

In line with policy to continually develop and improve its products, Washtech reserves the right to change specifications and design without notice.



SERVICE & SUPPORT

On call service where you are.
Washtech provides full service backup, 24 hours a day, 7 days a week with factory based technicians and a comprehensive nationwide network of independent service providers.
STARLINE SERVICE 09 829 0923

WASHTECH LTD

PO Box 90-548
Auckland 1142

414 Rosebank Road
Avondale
Auckland 1026
New Zealand

Phone 09 829 0930
info@washtech.co.nz
www.starline.co.nz

© Copyright Washtech 2011

A	Hot Water	temperature connection pressure flow quality backflow prevention	65C 3/4" 200-350 kPa 20 litres per min potable & soft atmospheric vacuum breaker
B	Waste	connection line	1.5 BSP 2" BSP
C	Electrical	single phase 230V 50Hz Reduced heating option	22A, 4.7kW 12A, 2.4kW

Refer operator manual for complete installation instructions.

Dimensions

Width	500mm
Depth	530mm
Height	830mm
Weight	45kg

Packed Dimensions

Width	575mm
Depth	610mm
Height	835mm
Weight	61kg
Cubic metres	0.3m ³