

STARLINE CD 100 RACK CONVEYOR DISHWASHER

The CD100 is a fully automatic rack conveyor dishwasher with a powerful wash zone, followed by a final rinse zone which is controlled to ensure that water is consumed only when racks are in the rinse zone. Standard capacity setting is 100 racks per hour and at this speed the machine uses a maximum of 300 litres of water per hour. Higher speed settings of up to 200 racks per hour are available on request. Specify direction with order.



Starline CD Range Features

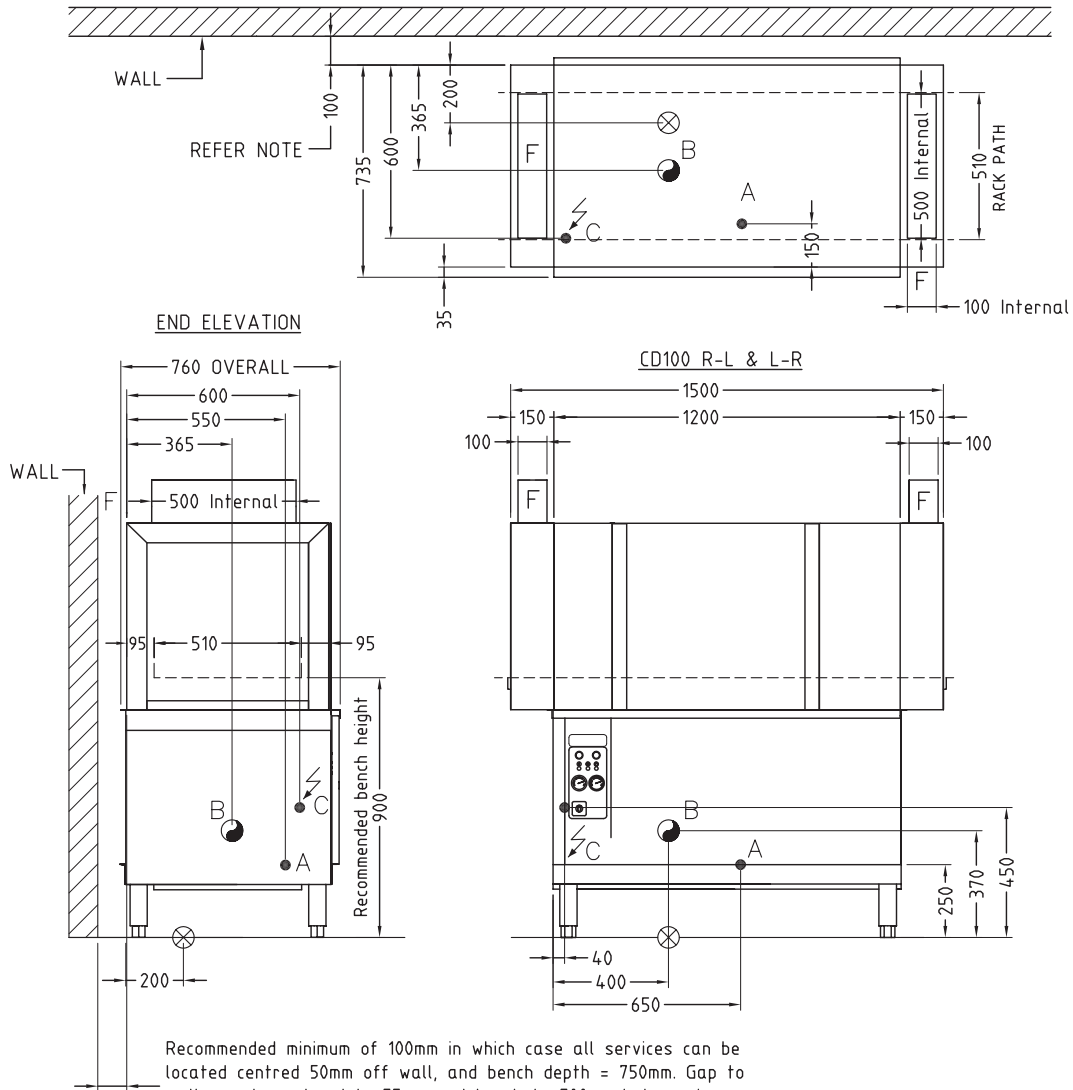
- Low water consumption
- Rinse economiser - machine uses water only when rack is in rinse zone
- Powerful wash via removable upper and lower stainless wash arms
- Automatic tank fill and run-dry protection for incalloy heating elements
- Interlocked wash and rinse heating
- Low temperature deactivation to ensure hygiene and regulatory compliance
- Powerful drive with safety clutch and optional bench stop switch
- Safety stop switches to all doors
- Vent hoods fitted standard with duct connections, baffles & easy bench connection
- Full width easily removable wash filter trays
- All stainless steel construction
- Simple electromechanical controls for ease of service
- Adjustable 200mm stainless legs
- Modular range include options to allow installation in minimal area
- CAD design service for layout options
- Nationwide installation and after sales support

Options

- | | |
|----------------------|---------------------------------------------------------|
| Insulation | full machine insulation available |
| Driers | 600 or 1200mm modules up to 18kW |
| Heat Recovery | to recover heat from exhaust air |
| Eco rinse | double final rinse for high rinse performance & economy |
| Neutral zone | enhances machine performance |
| Auto timer | automatically shuts machine off when not being used |
| Two speed drive | for different soil loadings |
| Pre-rinse spray guns | low water consumption high performance Fisher brand |
| Pre-rinse trough | increases dish processing efficiency |
| Side load table | facilitates installation in tight areas |
| Angle feed prewash | reduces space requirements |
| Corner sections | 90 & 180 degree, roller and driven |
| Roller exit tables | curved & straight in 500mm modules |
| Limit switch | stops drive & rinse when racks reach end of exit table |
| Extended height | for oversize washware items |
| Steam heat | steam wash, rinse and drier heating |

CD100 INSTALLATION DIAGRAM

CD100 11-07-08 1 C



Recommended minimum of 100mm in which case all services can be located centred 50mm off wall, and bench depth = 750mm. Gap to wall may be reduced to 75mm and bench to 700mm but services must then come through floor in adjacent location as shown.

CONNECTIONS			Ø
A	HOT WATER INLET = 65°C	200-400 kPa	AUS = 3/4" NZ = 1/2"
B	TANK DRAINAGE POINT IS RECOMMENDED MINIMUM WASTE PIPE	1.5" BSP = 2" BSP =	40mm 50mm
C	ELECTRICAL CONNECTION 400/415V, 3-N+E~ 50HZ	CD100 =	25A
⊗	SHOWS RECOMMENDED FLOOR PENETRATION. POSITION FOR WASTE AND SUPPLY		
F	EXTRACTION VIA CONNECTED DUCTS, We recommend consultation with ventilation professionals. Allow for presence of steam in extract air and provide good damper control to regulate extraction airflow. Split specified airflow between inlet and outlet of machine and adjust dampers to suit. When an overhead canopy is fitted air change requirements for the general area must be considered and total extraction flow required will be much greater.		10m ³ /min 170l /sec